



EST. 2008

PRECISION ARCHIVE / V.2026

SKF 232

— PRECISION ENGINEERED —

MOTION SYSTEMS

Industrial bearings engineered for aerospace, mining, wind, rail and automotive — manufactured in India, delivered globally with unforgiving tolerances and aerospace-grade discipline.

AEROSPACE GRADE

CERTIFIED TOLERANCE

ISO 9001 / IATF 16949



FACILITY · CNC MACHINING — NEW DELHI
PROC_LIVE / 2026

EST. 2008 / ENGINEERING DIVISION

MASTERY OF MECHANICS.

GLZ Bearings (Glidex International Pvt. Ltd.) engineers precision industrial bearings — spherical, cylindrical, tapered and angular contact — for aerospace, mining, wind, rail and automotive applications. Tight tolerances, rigorous quality control, global delivery from New Delhi, India.

“We don’t ship bearings. We ship trust in motion — every component traceable, every tolerance verified, every shipment underwritten by our engineers.”
— DIRECTOR, ENGINEERING

40+

EXPORT COUNTRIES

2M+

BEARINGS PRODUCED

ISO

9001 / IATF 16949

24H

ENGINEERING RESPONSE

MATERIAL GRADE

AISI 52100

Chrome / Carburised

TOLERANCE

P4 / ABEC 7

Sub-micron deviation

LUBRICATION

MOS2 / SYNTHETIC

Operating -50 to 250 °C

COMPLIANCE

ISO 492

Aerospace audited

02 · CATALOG / BALL SERIES

CATEGORY · BALL BEARINGS

DEEP GROOVE BALL BEARING

Versatile single-row design handling combined radial and moderate axial loads with low friction and quiet running.

MODEL_ID · GLZ-DEEP-7005



REQUEST QUOTE >

TECH SHEET

IN STOCK

45,000 RPM

MAX LIMITING SPEED

128.5 KN

STATIC LOAD RATING

P4 / ABEC 7

PRECISION GRADE

150°

THERMAL CEILING

TECHNICAL CATALOG DATA

METRIC

MODEL ID	BORE d	OUTER D	WIDTH B	DYN Cr	STA C0r	MAX RPM	GRADE
GLZ-DEEP-7005-C	25	47	12	14.8	9.5	48,000	P4 / ABEC 7
GLZ-DEEP-7008-E	40	68	15	24.5	18.2	32,000	P4 / ABEC 7
GLZ-DEEP-7011-C	50	80	16	31.0	24.5	26,000	P5 / ABEC 5
GLZ-DEEP-7014-E	60	95	18	42.5	33.0	20,000	P5 / ABEC 5

MATERIAL SCIENCE

CHROME STEEL

OPERATING -40 to 150 °C · STANDARD FINISH

TYPICAL APPLICATIONS

Electric motors · Pumps · Appliances

02 · CATALOG / BALL SERIES

CATEGORY · BALL BEARINGS

ANGULAR CONTACT BALL BEARING

Raceways arranged to support combined radial and thrust loads — purpose-built for spindle and gear applications.

MODEL_ID · GLZ-ANGULA-7012



REQUEST QUOTE >

TECH SHEET

IN STOCK

45,000 RPM

MAX LIMITING SPEED

128.5 KN

STATIC LOAD RATING

P4 / ABEC 7

PRECISION GRADE

150°

THERMAL CEILING

TECHNICAL CATALOG DATA

METRIC

MODEL ID	BORE d	OUTER D	WIDTH B	DYN Cr	STA COr	MAX RPM	GRADE
GLZ-ANGU-7005-C	25	47	12	14.8	9.5	48,000	P4 / ABEC 7
GLZ-ANGU-7008-E	40	68	15	24.5	18.2	32,000	P4 / ABEC 7
GLZ-ANGU-7011-C	50	80	16	31.0	24.5	26,000	P5 / ABEC 5
GLZ-ANGU-7014-E	60	95	18	42.5	33.0	20,000	P5 / ABEC 5

MATERIAL SCIENCE

CHROME STEEL

OPERATING -30 to 150 °C · STANDARD FINISH

TYPICAL APPLICATIONS

Machine tool spindles · Gearboxes · Pumps

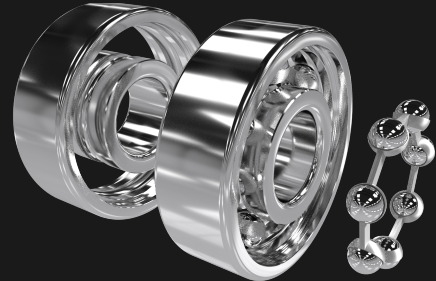
02 · CATALOG / BALL SERIES

CATEGORY · BALL BEARINGS

STAINLESS BALL BEARING

Stainless rings and rolling elements for wet, washdown and corrosive environments without sacrificing precision.

MODEL_ID · GLZ-STAINL-7019



MADE TO ORDER

REQUEST QUOTE >

TECH SHEET

45,000 RPM

MAX LIMITING SPEED

62.4 KN

STATIC LOAD RATING

P4 / ABEC 7

PRECISION GRADE

200°

THERMAL CEILING

TECHNICAL CATALOG DATA

METRIC

MODEL ID	BORE d	OUTER D	WIDTH B	DYN Cr	STA COr	MAX RPM	GRADE
GLZ-STAI-7005-C	10	26	8	4.55	2.36	65,000	P2 / ABEC 9
GLZ-STAI-7008-E	15	32	9	5.85	3.10	55,000	P4 / ABEC 7
GLZ-STAI-7011-C	20	42	12	9.40	5.05	42,000	P4 / ABEC 7
GLZ-STAI-7014-E	25	52	15	14.0	785	34,000	P4 / ABEC 7

MATERIAL SCIENCE

440C STAINLESS

OPERATING -40 to 200 °C · CORROSION RESISTANT

TYPICAL APPLICATIONS

Food & beverage · Medical · Marine

02 · CATALOG / ROLLER SERIES

CATEGORY · ROLLER BEARINGS

SPHERICAL ROLLER BEARING

Self-aligning two-row design absorbing the heaviest radial loads, shock loads and shaft deflection with composure.

MODEL_ID · GLZ-SPHERI-7026



REQUEST QUOTE >

TECH SHEET

IN STOCK

18,000 RPM

MAX LIMITING SPEED

248.0 KN

STATIC LOAD RATING

P5 / ABEC 5

PRECISION GRADE

200°

THERMAL CEILING

TECHNICAL CATALOG DATA

METRIC

MODEL ID	BORE d	OUTER D	WIDTH B	DYN Cr	STA C0r	MAX RPM	GRADE
GLZ-SPHE-7005-C	60	110	22	64.0	50.0	18,000	P4 / ABEC 7
GLZ-SPHE-7008-E	80	140	26	92.5	78.0	14,000	P4 / ABEC 7
GLZ-SPHE-7011-C	100	180	34	148.0	128.5	9,800	P5 / ABEC 5
GLZ-SPHE-7014-E	120	215	40	212.0	186.0	7,200	P5 / ABEC 5

MATERIAL SCIENCE

CARBURISED STEEL

OPERATING -30 to 200 °C · STANDARD FINISH

TYPICAL APPLICATIONS

Mining · Paper mills · Marine propulsion

02 · CATALOG / ROLLER SERIES

CATEGORY · ROLLER BEARINGS

CYLINDRICAL ROLLER BEARING

High radial capacity with separable design — engineered for rotational rigidity at speed in heavy-duty drivelines.



MODEL_ID · GLZ-CYLIND-7033

REQUEST QUOTE >

TECH SHEET

IN STOCK

45,000 RPM
MAX LIMITING SPEED

248.0 KN
STATIC LOAD RATING

P4 / ABEC 7
PRECISION GRADE

180°
THERMAL CEILING

TECHNICAL CATALOG DATA

METRIC

MODEL ID	BORE d	OUTER D	WIDTH B	DYN Cr	STA C0r	MAX RPM	GRADE
GLZ-CYLI-7005-C	60	110	22	64.0	50.0	18,000	P4 / ABEC 7
GLZ-CYLI-7008-E	80	140	26	92.5	78.0	14,000	P4 / ABEC 7
GLZ-CYLI-7011-C	100	180	34	148.0	128.5	9,800	P5 / ABEC 5
GLZ-CYLI-7014-E	120	215	40	212.0	186.0	7,200	P5 / ABEC 5

MATERIAL SCIENCE
THROUGH-HARDENED STEEL
OPERATING -30 to 180 °C · STANDARD FINISH

TYPICAL APPLICATIONS
Gearboxes · Traction motors · Compressors

02 · CATALOG / ROLLER SERIES

CATEGORY · ROLLER BEARINGS

TAPERED ROLLER BEARING

Optimised for combined radial and axial loads — the workhorse of automotive driveline and heavy machinery.

MODEL_ID · GLZ-TAPERE-7040



REQUEST QUOTE >

TECH SHEET

IN STOCK

18,000 RPM

MAX LIMITING SPEED

248.0 KN

STATIC LOAD RATING

P5 / ABEC 5

PRECISION GRADE

180°

THERMAL CEILING

TECHNICAL CATALOG DATA

METRIC

MODEL ID	BORE d	OUTER D	WIDTH B	DYN Cr	STA C0r	MAX RPM	GRADE
GLZ-TAPE-7005-C	60	110	22	64.0	50.0	18,000	P4 / ABEC 7
GLZ-TAPE-7008-E	80	140	26	92.5	78.0	14,000	P4 / ABEC 7
GLZ-TAPE-7011-C	100	180	34	148.0	128.5	9,800	P5 / ABEC 5
GLZ-TAPE-7014-E	120	215	40	212.0	186.0	7,200	P5 / ABEC 5

MATERIAL SCIENCE

CASE-HARDENED STEEL

OPERATING -30 to 180 °C · STANDARD FINISH

TYPICAL APPLICATIONS

Automotive wheels · Industrial drives · Construction

02 · CATALOG / ROLLER SERIES

CATEGORY · ROLLER BEARINGS

NEEDLE ROLLER BEARING

Slim cross-section with high radial capacity — chosen where shaft envelope is constrained without compromise on load.



REQUEST QUOTE >

TECH SHEET

18,000 RPM
MAX LIMITING SPEED

128.5 KN
STATIC LOAD RATING

P5 / ABEC 5
PRECISION GRADE

150°
THERMAL CEILING

TECHNICAL CATALOG DATA

METRIC

MODEL ID	BORE d	OUTER D	WIDTH B	DYN Cr	STA C0r	MAX RPM	GRADE
GLZ-NEED-7005-C	25	47	12	14.8	9.5	48,000	P4 / ABEC 7
GLZ-NEED-7008-E	40	68	15	24.5	18.2	32,000	P4 / ABEC 7
GLZ-NEED-7011-C	50	80	16	31.0	24.5	26,000	P5 / ABEC 5
GLZ-NEED-7014-E	60	95	18	42.5	33.0	20,000	P5 / ABEC 5

MATERIAL SCIENCE
CHROME STEEL
OPERATING -30 to 150 °C · STANDARD FINISH

TYPICAL APPLICATIONS
Transmissions · Connecting rods · Compact drives

02 · CATALOG / SPECIALTY SERIES

CATEGORY · SPECIALTY BEARINGS

THRUST BEARING

Engineered for pure axial loads. Available in ball, cylindrical and spherical roller configurations on request.

MODEL_ID · GLZ-THRUST-7054



REQUEST QUOTE >

TECH SHEET

IN STOCK

18,000 RPM

MAX LIMITING SPEED

248.0 KN

STATIC LOAD RATING

P5 / ABEC 5

PRECISION GRADE

180°

THERMAL CEILING

TECHNICAL CATALOG DATA

METRIC

MODEL ID	BORE d	OUTER D	WIDTH B	DYN Cr	STA C0r	MAX RPM	GRADE
GLZ-THRU-7005-C	60	110	22	64.0	50.0	18,000	P4 / ABEC 7
GLZ-THRU-7008-E	80	140	26	92.5	78.0	14,000	P4 / ABEC 7
GLZ-THRU-7011-C	100	180	34	148.0	128.5	9,800	P5 / ABEC 5
GLZ-THRU-7014-E	120	215	40	212.0	186.0	7,200	P5 / ABEC 5

MATERIAL SCIENCE

THROUGH-HARDENED STEEL

OPERATING -30 to 180 °C · STANDARD FINISH

TYPICAL APPLICATIONS

Vertical pumps · Gear drives · Crane hooks

02 · CATALOG / SPECIALTY SERIES

CATEGORY · SPECIALTY BEARINGS

CERAMIC HYBRID BEARING

Steel rings with silicon nitride rolling elements — lower friction, higher speed, immunity to electrical erosion.



REQUEST QUOTE >

TECH SHEET

45,000 RPM
MAX LIMITING SPEED

62.4 KN
STATIC LOAD RATING

P4 / ABEC 7
PRECISION GRADE

200°
THERMAL CEILING

TECHNICAL CATALOG DATA

METRIC

MODEL ID	BORE d	OUTER D	WIDTH B	DYN Cr	STA C0r	MAX RPM	GRADE
GLZ-CERA-7005-C	10	26	8	4.55	2.36	65,000	P2 / ABEC 9
GLZ-CERA-7008-E	15	32	9	5.85	3.10	55,000	P4 / ABEC 7
GLZ-CERA-7011-C	20	42	12	9.40	5.05	42,000	P4 / ABEC 7
GLZ-CERA-7014-E	25	52	15	14.0	785	34,000	P4 / ABEC 7

MATERIAL SCIENCE
SILICON NITRIDE / STEEL
OPERATING -50 to 200 °C · CORROSION RESISTANT

TYPICAL APPLICATIONS
High-speed spindles · Vacuum · Specialty motors

04 · ENTERPRISE / GLOBAL NETWORK



GLOBAL LOGISTICS & ENTERPRISE
MANUFACTURING HUB.

Forty-plus markets served. Aerospace-grade traceability from forge to flight.

GLOBAL SUPPLY CHAIN NETWORK - ENTERPRISE MANUFACTURING HUB

42 HUBS
NETWORK CAPACITY

24/7 CONTACT
LEAD TIME

100% AUDITED
COMPLIANCE

INDUSTRIES SERVED

AERO-001

AEROSPACE

Turbine spindles · Landing gear · Actuators

MIN-002

MINING & AGGREGATE

Crushers · Conveyors · Vibrating screens

WND-003

WIND ENERGY

Main shaft · Yaw · Pitch · Gearbox

**BUILT FOR PERFORMANCE.
TRUSTED WORLDWIDE.**

GLOBAL HQ

Glidex International Private Limited
B-67, First Floor, Rewari Line, Industrial Area Phase-II
Mayapuri, New Delhi, 110064, IN

+91 99964 74009

engineering@glzbearings.com